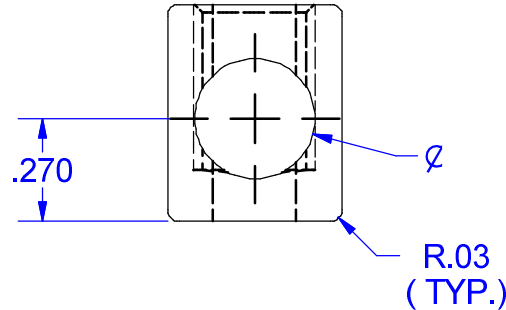
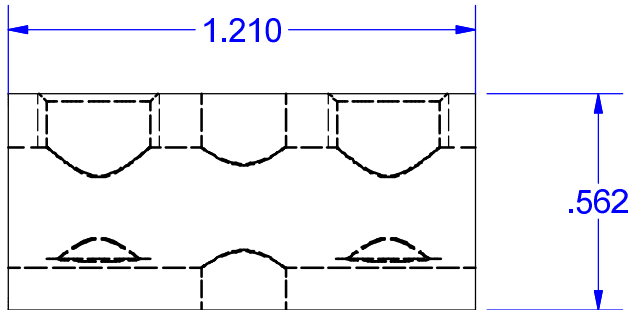


SCREW #13627  
(TIN PLATED ALUMINUM)



**IHI Connectors**  
International Hydraulics Inc.  
ihiconnectors.com™

**UL**  
Listed 84JM  
ZMVV E129884

Wire Size	Rated Torque
2-3 AWG	40 IN. LBS.
4-6 AWG	35 IN. LBS.
8 AWG	30 IN. LBS.
10-14 AWG	25 IN. LBS.

**Pressure Terminal Connectors**  
UL Cat. No. **P2**

**2-14CU9, 2-8AL9**

90°C  
GENERAL USE

WIRE COMBINATIONS:  
2- #14 SOLID, 2- #14 STRANDED,  
2- #12 SOLID, 2- #12 STRANDED,  
2- #10 SOLID, 2- #10 STRANDED  
ONLY, NO MIXING

**PART MARKED**

AL9CU  
P2  
UL Logo  
IHI Logo

NOT FOR USE WHERE FAILURE CREATES A HAZARD TO HUMAN HEALTH OR SAFETY. ALL PRODUCTS ARE SUBJECT TO THIS FULL DISCLAIMER:  
<http://www.ihiconnectors.com/disclaimer.html>

FOR FURTHER INFORMATION ON THE PROPER USE OF THIS PRODUCT IN SPECIFIC APPLICATIONS SEE  
<http://www.ihiconnectors.com/GuideToFlexFlexibleFineStrandedWireCableMechanicalLugsFAQ.html>  
<http://www.ihiconnectors.com/Technical-Data-Installation.htm>

THIS DRAWING AND DESIGN ARE THE PROPERTY OF INTERNATIONAL HYDRAULICS, INC., CLEVELAND, OHIO, AND MAY NOT BE DUPLICATED, USED FOR THE BASIS OF DESIGN OR MANUFACTURE WITHOUT THE WRITTEN PERMISSION OF INTERNATIONAL HYDRAULICS, INC., CLEVELAND, OHIO.		<b>INTERNATIONAL HYDRAULICS, INC.</b>	
GENERAL TOLERANCES inch±.015 {mm±.038}		TITLE: <b>P2-HEX (SALES) CONNECTOR</b>	
MATERIAL: <b>6061-T6 (11932)</b>	SIZE:	DRAWN BY: <b>TDS</b>	DWG NO.: <b>P2-HEX (SALES)</b>
FINISH: <b>TIN PLATE EMS</b>	DATE: <b>2/23/09 4/22/15</b>	<b>IHI CONNECTORS</b>	