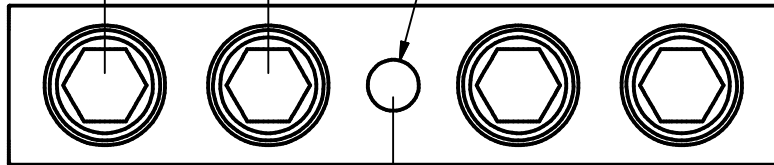
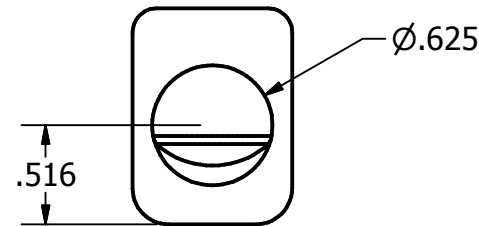
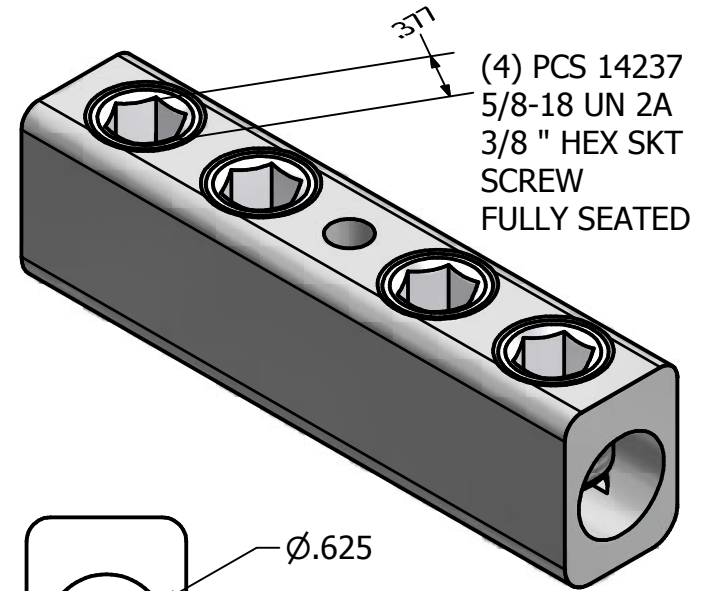
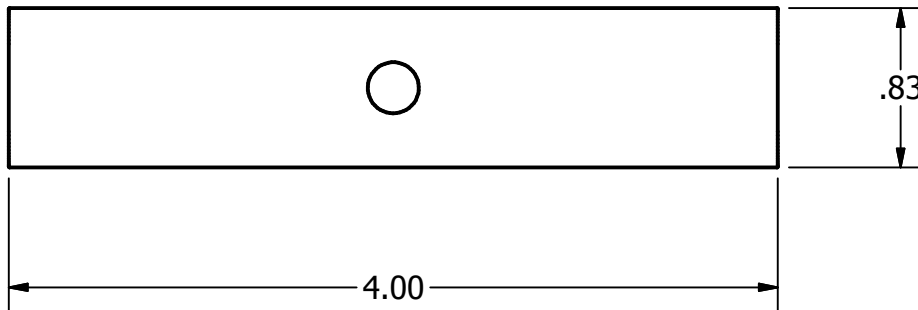


1.35  
 .50  
 Ø.266 SIGHT HOLE OR USE 1/4" (Gr.2) OR M6 (8.8) BOLT FOR BUS OR GROUND MOUNTING. USER TO PROVIDE ANTI- ROTATION



EDGES TUMBLE  
 DESHARPED



CODE WIRE: CU /AL 250kcmil-6 AWG METRIC 120-16mm<sup>2</sup> CLASS 2 (r)  
 FLEX WIRE: CU 3/0-6 FLEX WIRE G, H, I, DLO, K (WELD)  
 CU 70-16mm<sup>2</sup> CLASS 5 (f)  
 STRIP LENGTH: 1.87" SEE AGENCY LABEL FOR CORRECT SCREW TORQUE

NOT FOR USE WHERE FAILURE CREATES A HAZARD TO HUMAN HEALTH OR SAFETY. ALL PRODUCTS ARE SUBJECT TO THIS FULL DISCLAIMER: <http://www.ihconnectors.com/disclaimer.html>

FOR FURTHER INFORMATION ON THE PROPER USE OF THIS PRODUCT IN SPECIFIC APPLICATIONS SEE <http://www.ihconnectors.com/GuideToFlexFlexibleFineStrandedWireCableMechanicalLugsFAQ.html>

<http://www.ihconnectors.com/Technical-Data-Installation.htm>

FLEX WIRE 3/0-6 AWG

|  |                     |  |                     |           |
|--|---------------------|--|---------------------|-----------|
| THIS DRAWING AND DESIGN ARE THE PROPERTY OF INTERNATIONAL HYDRAULICS, INC., CLEVELAND, OHIO, AND MAY NOT BE DUPLICATED, USED FOR THE BASIS OF DESIGN OR MANUFACTURE WITHOUT THE WRITTEN PERMISSION OF INTERNATIONAL HYDRAULICS, INC., CLEVELAND, OHIO. |                     | INTERNATIONAL HYDRAULICS, INC.   |                     |           |
| GENERAL TOLERANCES<br>±.015 (±0,39)  |                     | TITLE<br>P250-2S (2 SCREWS/WIRE)<br>DUAL BINDING SCREW FLEX<br>SPLICER-REDUCER |                     |           |
| MATERIAL:<br>6061-T6   | SIZE:<br>A          | DRAWN BY:<br>cridley   | DWG NO.:<br>P250-2S | REV:<br>0 |
| FINISH:<br>TIN PLATED  | DATE:<br>10-11-2016 | IHI CONNECTORS   |                     |           |