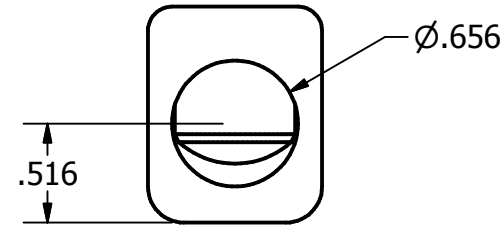
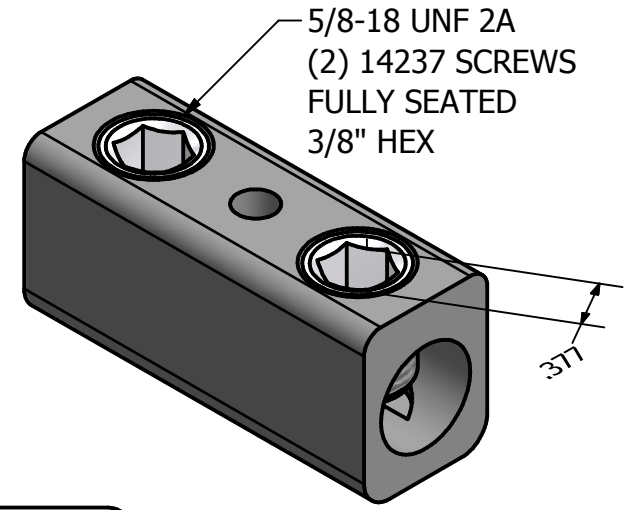
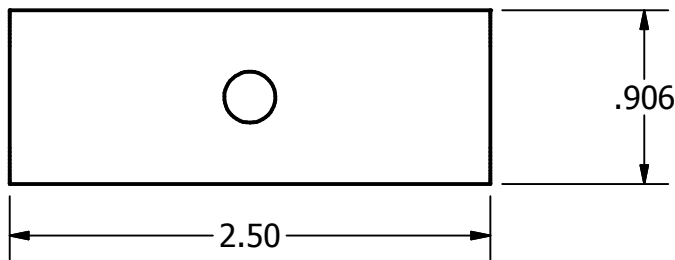
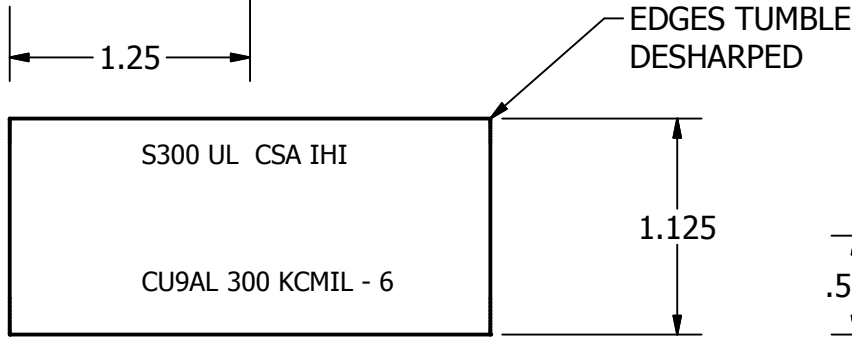
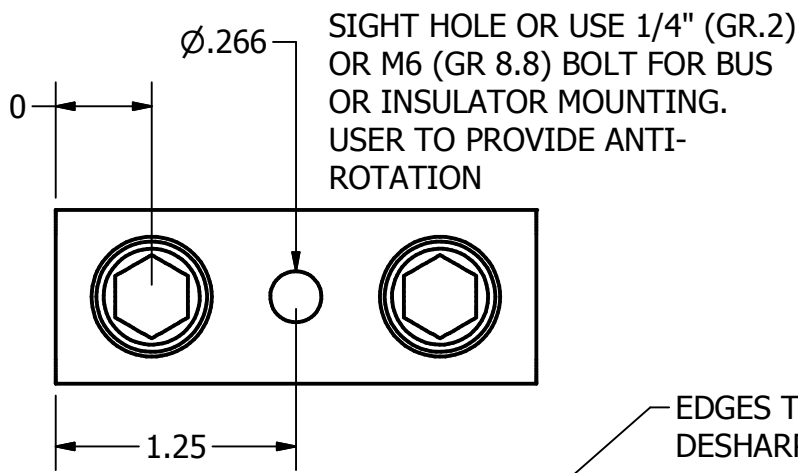


NOT FOR USE WHERE FAILURE CREATES A HAZARD TO HUMAN HEALTH OR SAFETY. ALL PRODUCTS ARE SUBJECT TO THIS FULL DISCLAIMER:  
<http://www.ihconnectors.com/disclaimer.html>

FOR FURTHER INFORMATION ON THE PROPER USE OF THIS PRODUCT IN SPECIFIC APPLICATIONS SEE  
<http://www.ihconnectors.com/GuideToFlexFlexibleFineStrandedWireCableMechanicalLugsFAQ.html>  
<http://www.ihconnectors.com/Technical-Data-Installation.htm>



**PART MARKED**  
 IHI LOGO  
 S300  
 UL LOGO  
 300 KCMIL-6  
 CU9AL

**IHI Connectors**  
 International Hydraulics Inc.  
 ihconnectors.com



200116



Listed 84JM  
 ZMVV  
 E129884

Pressure Terminal  
 Connectors

NRTL Cat. No.  
**S300**

300kcmil-6 AL9CU

Wire Size Copper (solid to semi- rigid stranded and metric mm <sup>2</sup> , #)	Rating °C	Wire Size FLEX Copper (#)	Wire Size aluminum	Torque (all drive means)
300-2	90	4/0-2	300-2	375
2-6		2-6	2-6	275

(#) FLEX - covers stranding classes within  
 G, H, I/DLO, Metric class5 and K/MTW. (##)  
 mm2 sizes within AWG/kcmil ranges are  
 included.

<http://www.lugsdirect.com/GuideToFlexFlexibleFineStrandedWireCableMechanicalLugsFAQ.html>

CODE WIRE: CU/AL 300 KCMIL -6 AWG METRIC 150mm<sup>2</sup> CLASS 2 (r)  
 FLEX WIRE: CU 4/0-6 FLEX WIRE G, H, I, DLO, K  
 CU 95mm<sup>2</sup>- 16mm<sup>2</sup> CLASS 5 (f)  
 STRIP LENGTH 1.12" SEE AGENCY LABEL FOR CORRECT SCREW  
 TORQUE

THIS DRAWING AND DESIGN ARE THE PROPERTY OF INTERNATIONAL HYDRAULICS, INC., CLEVELAND, OHIO, AND MAY NOT BE DUPLICATED, USED FOR THE BASIS OF DESIGN OR MANUFACTURE WITHOUT THE WRITTEN PERMISSION OF INTERNATIONAL HYDRAULICS, INC., CLEVELAND, OHIO.					<b>INTERNATIONAL HYDRAULICS, INC.</b>					
<b>GENERAL TOLERANCES</b> ±.015 (±0,39)					TITLE: P300 300kcmil-6					
MATERIAL: 6061-T6					SIZE: A		DRAWN BY: cridley		DWG NO.: P300	
FINISH: TIN PLATING					DATE: 10-23-2016				REV: 0	
									<b>IHI CONNECTORS</b>	