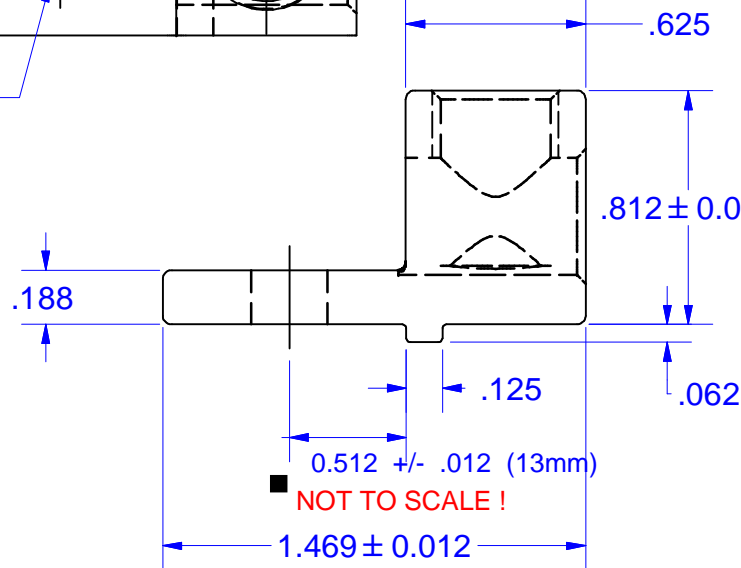
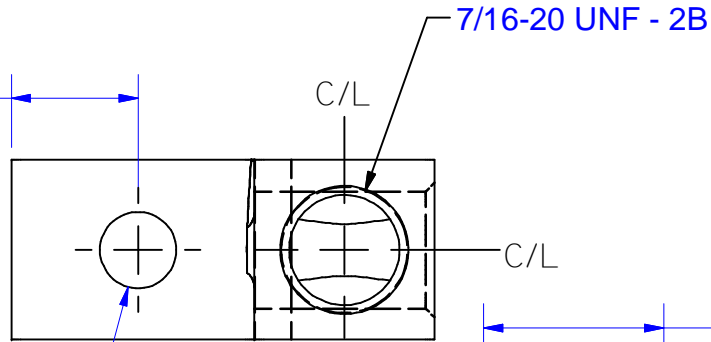
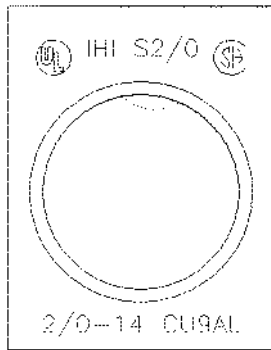


NOT TO SCALE !

MARKING
S2/0
IHI
2/0-14
CU9AL
UL Logo
CSA Logo

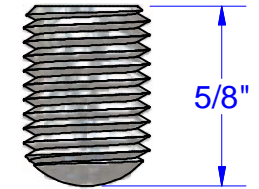
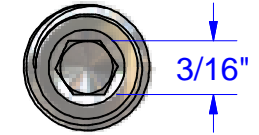
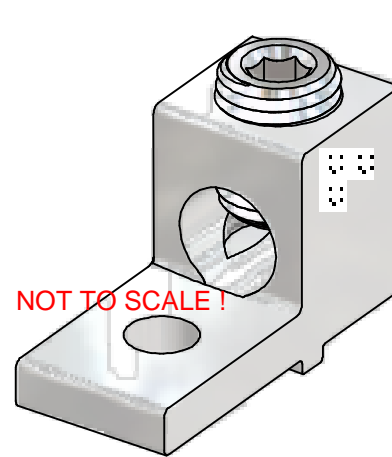
REF (0.33)
(8.4 mm)

0.343 +/- .01 (8.7mm)



NOT TO SCALE !

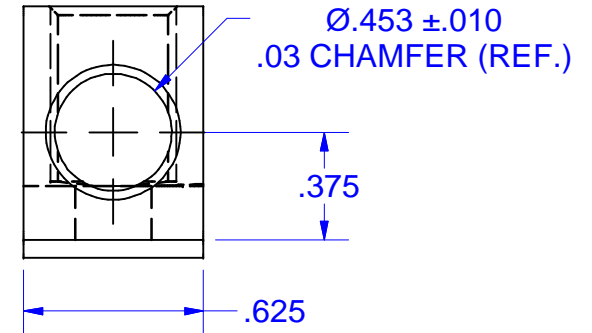
NOT TO SCALE !



SCREW# 11703
(ALUMINUM
TIN PLATED)

7/16-20 UNF-2B HEX SOCKET
ASSEMBLE SCREW SNUG
TO BOTTOM

2/0-14 WIRE CONNECTOR



ALSO AVAILABLE WITH SLOTTED SCREW IN PLACE OF HEX SOCKET

IHI UL/CSA Installation Guide to Drill or Enlarge Mounting Holes:
<https://lugsdirect.com/PDF%20Documents/IHI-MTG-HOLE-FIELD-MODS-UL&CSA-CERTIFICATIONS.pdf>

Cat. No. S2/0 Style No. ALL

- Drill, Enlarge, or Modify Mounting Holes
- 1) Increase hole(s) dia. to 1/2 bolt (17/32 drill dia.)
- 2) Move location of mounting hole(s)
- 3) If buying blank lug, put custom hole(s) in.

NOT FOR USE WHERE FAILURE CREATES A HAZARD TO HUMAN HEALTH OR SAFETY. ALL PRODUCTS ARE SUBJECT TO THIS FULL DISCLAIMER:
<http://www.ihconnectors.com/disclaimer.html>

FOR FURTHER INFORMATION ON THE PROPER USE OF THIS PRODUCT IN SPECIFIC APPLICATIONS SEE
<http://www.ihconnectors.com/GuideToFlexFlexibleFineStrandedWireCableMechanicalLugsFAQ.html>
<http://www.ihconnectors.com/Technical-Data-Installation.htm>

THIS DRAWING AND DESIGN ARE THE PROPERTY OF INTERNATIONAL HYDRAULICS, INC., CLEVELAND, OHIO, AND MAY NOT BE DUPLICATED, USED FOR THE BASIS OF DESIGN OR MANUFACTURE WITHOUT THE WRITTEN PERMISSION OF INTERNATIONAL HYDRAULICS, INC., CLEVELAND, OHIO.		INTERNATIONAL HYDRAULICS, INC.		
GENERAL TOLERANCES ±.015 (±0.038)		TITLE: 2/0-14 TURN PREVENT LUG S2-0-TP-34-51-HEX (SALES)		
MATERIAL: 6061-T6 (X1075TP)	SIZE:	DRAWN BY:	DWG NO.: S2-0-TP-34-51-HEX (SALES)	REV: 1
FINISH: TIN PLATE EMS 131	DATE: 11-18-2017	THIS IS A CAD DRAWING, DO NOT MANUALLY REVISE		