

**PARTS MARKED**

S2/0  
2/0-14  
CU9AL  
UL Logo  
CSA Logo  
IHI

■  $\phi$ .343

[8.71]

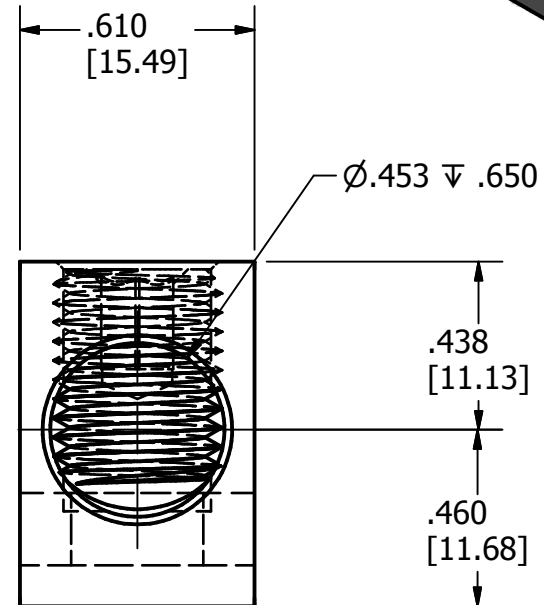
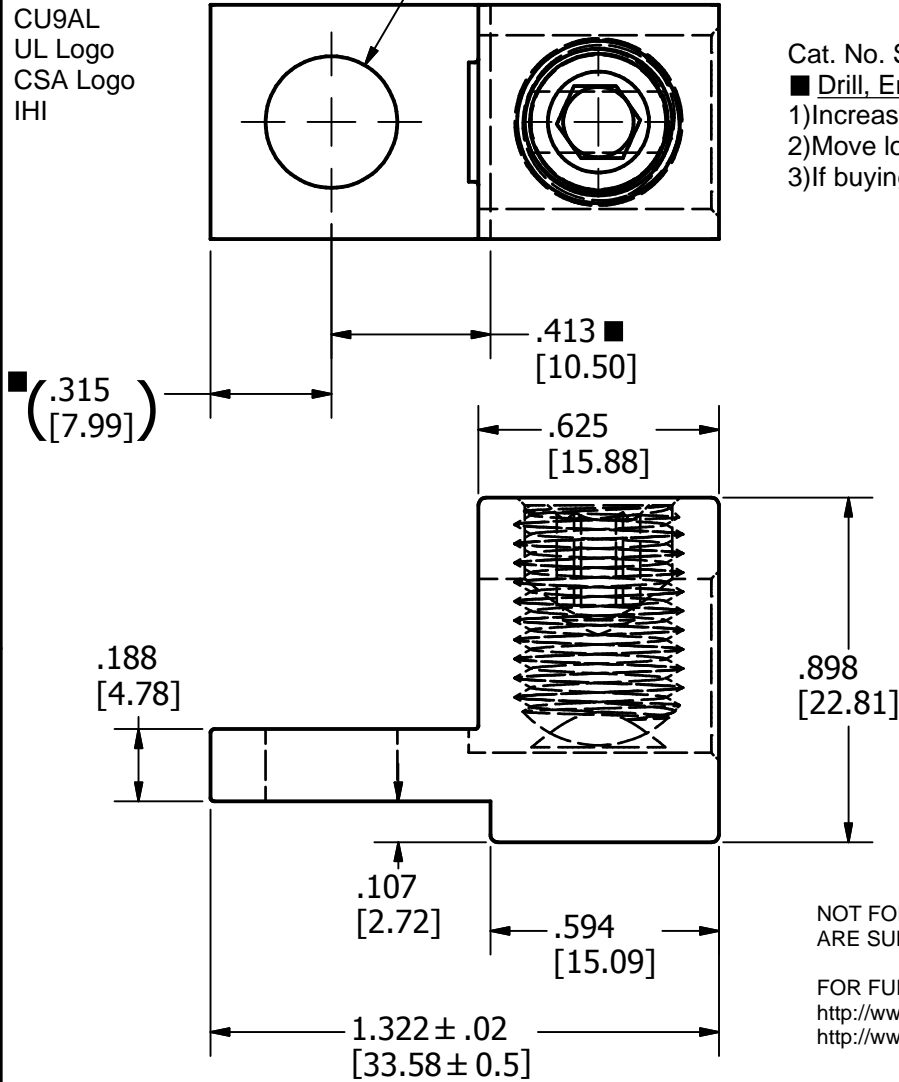
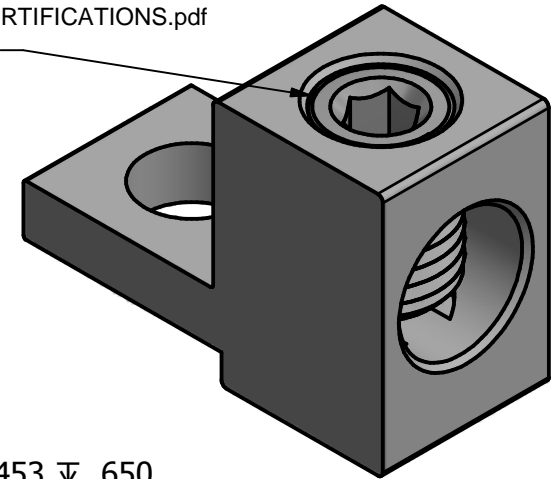
IHI UL/CSA Installation Guide to Drill or Enlarge Mounting Holes:  
<https://lugsdirect.com/PDF%20Documents/IHI-MTG-HOLE-FIELD-MODS-UL&CSA-CERTIFICATIONS.pdf>

7/16-20 UNF - 2B

Cat. No. S2/0 Style No. ALL

■ Drill, Enlarge, or Modify Mounting Holes

- 1) Increase hole(s) dia. to 1/2 bolt (17/32 drill dia.)
- 2) Move location of mounting hole(s)
- 3) If buying blank lug, put custom hole(s) in.



NOT FOR USE WHERE FAILURE CREATES A HAZARD TO HUMAN HEALTH OR SAFETY. ALL PRODUCTS ARE SUBJECT TO THIS FULL DISCLAIMER: <http://www.ihiconnectors.com/disclaimer.html>

FOR FURTHER INFORMATION ON THE PROPER USE OF THIS PRODUCT IN SPECIFIC APPLICATIONS SEE <http://www.ihiconnectors.com/GuideToFlexFlexibleFineStrandedWireCableMechanicalLugsFAQ.html>  
<http://www.ihiconnectors.com/Technical-Data-Installation.htm>

THIS DRAWING AND DESIGN ARE THE PROPERTY OF INTERNATIONAL HYDRAULICS, INC., CLEVELAND, OHIO, AND MAY NOT BE DUPLICATED, USED FOR THE BASIS OF DESIGN OR MANUFACTURE WITHOUT THE WRITTEN PERMISSION OF INTERNATIONAL HYDRAULICS, INC., CLEVELAND, OHIO.

**INTERNATIONAL HYDRAULICS, INC.**

TITLE: **S2-0TP-S-34-41-HEX**

**2/0-14 TP LUG**

**GENERAL TOLERANCES**  
**±.015 (±0,39)**

MATERIAL:  
6061-T6 X1075TP-S

SIZE:  
A

DRAWN BY:  
cridley

DWG NO.:  
S2-0TP-S-34-41-HEX

REV:  
1

FINISH:

DATE:  
1-2-2017

**IHI CONNECTORS**

**REVISION HISTORY**

ZONE	REV	DESCRIPTION	DATE	APPROVED
1.322 WAS 1.200, .188 WAS .181, .107 WAS .114	1	LONGER EXTRN	4/7/2017	CDMR