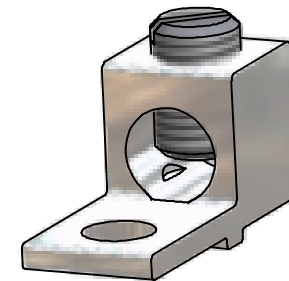


SCREW #13627
TIN PLATED
ALUMINUM
PART NO.
S2-TP-13627

SCREW #10850
TIN PLATED
ALUMINUM
PART NO.
S2-TP-10850



PART MARKED

S2
IHI Logo
UL Logo
CSA Logo
2-14
CU9AL

2-14 AWG. WIRE CONNECTOR
REF. 2700-1001 (ASSY.)

Cat. No. S2 Style No. ALL

Drill, Enlarge, or Modify Mounting Holes


- 1) Increase hole(s) dia. to 5/16 bolt (.323 drill dia.)
- 2) Move location of mounting hole(s)
- 3) If buying blank lug, put custom hole(s) in.

IHI UL/CSA Installation Guide to Drill or Enlarge Mounting Holes:

<https://lugsdirect.com/PDF%20Documents/IHI-MTG-HOLE-FIELD-MODS-UL&CSA-CERTIFICATIONS.pdf>

NOT FOR USE WHERE FAILURE CREATES A HAZARD TO HUMAN HEALTH OR SAFETY. ALL PRODUCTS ARE SUBJECT TO THIS FULL DISCLAIMER: <http://www.ihiconnectors.com/disclaimer.html>

FOR FURTHER INFORMATION ON THE PROPER USE OF THIS PRODUCT IN SPECIFIC APPLICATIONS SEE <http://www.ihiconnectors.com/GuideToFlexFlexibleFineStrandedWireCableMechanicalLugsFAQ.html> <http://www.ihiconnectors.com/Technical-Data-Installation.htm>

 Expanded wire range with use of ferrules.
TORK KRIMP, self crimping of standard UL Listed ferrules. Patent Pending.
For full instructions: <https://lugsdirect.com/PDF Documents/IHI Agency Labels/S2-AGENCY-LABEL.pdf>

<small>THIS DRAWING AND DESIGN ARE THE PROPERTY OF INTERNATIONAL HYDRAULICS, INC., CLEVELAND, OHIO, AND MAY NOT BE DUPLICATED, USED FOR THE BASIS OF DESIGN OR MANUFACTURE WITHOUT THE WRITTEN PERMISSION OF INTERNATIONAL HYDRAULICS, INC., CLEVELAND, OHIO.</small>				INTERNATIONAL HYDRAULICS, INC.	
GENERAL TOLERANCES $\pm .015 (\pm 0.038)$		TITLE: S2-TP MECHANICAL CONNECTOR WITH ALUMINUM SET SCREW CONNECTOR			
MATERIAL: 6061-T6 (X1011TP)	SIZE:	DRAWN BY: TDS	DWG NO.:	REV:	
FINISH: TIN PLATE EMS	DATE: 8/26/09	S2-TP-XXXXX (SALES)		IHI CONNECTORS	