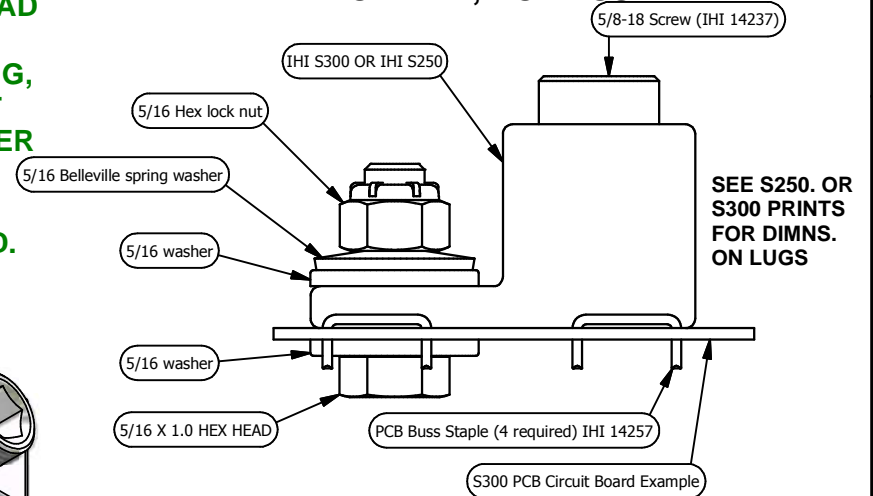
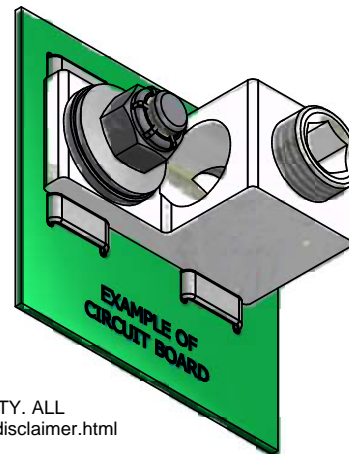
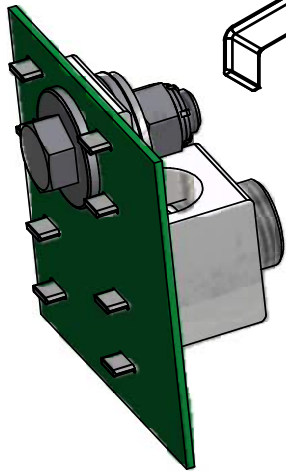
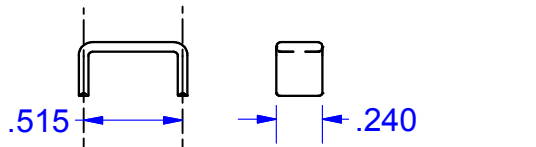


**BOM: 1 - LUG BODY & WIRE SCREW ASSEMBLED  
6 - 14257 WAVE SOLDERABLE BUS STAPLES  
1 - HARDWARE BOLT KIT, NOT ASSEMBLED**

**CONSULT IHI (440-951-7186) FOR GUIDANCE ON TIN COATED PAD DIMENSIONS UNDER LUG, MASKING AND ANTI-FRETTING, ANTI-OXIDATION LUBRICANT FOR LIFE OF JOINT. CUSTOMER STRESS CYCLE TESTING TO CONFIRM ADEQUATE CONSTRUCTION IS REQUIRED.**

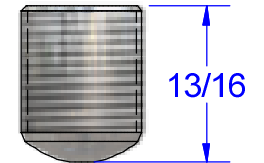
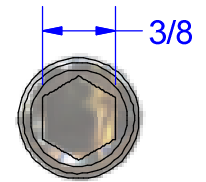
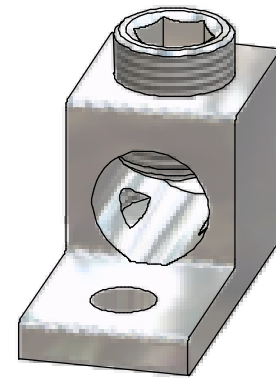
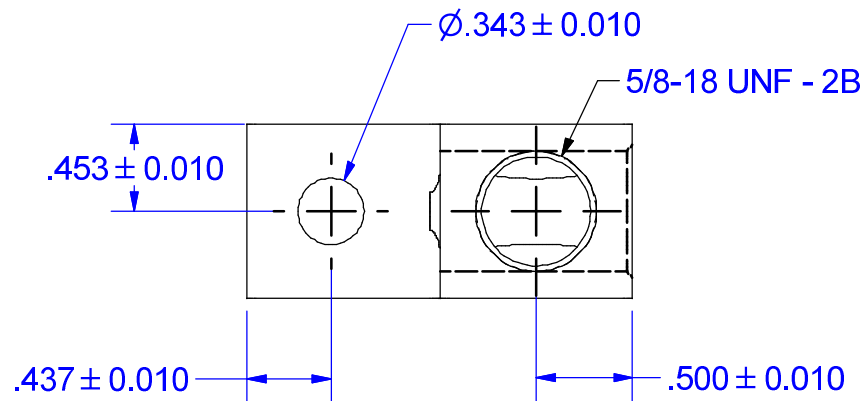


NOT FOR USE WHERE FAILURE CREATES A HAZARD TO HUMAN HEALTH OR SAFETY. ALL PRODUCTS ARE SUBJECT TO THIS FULL DISCLAIMER: <http://www.ihconnectors.com/disclaimer.html>

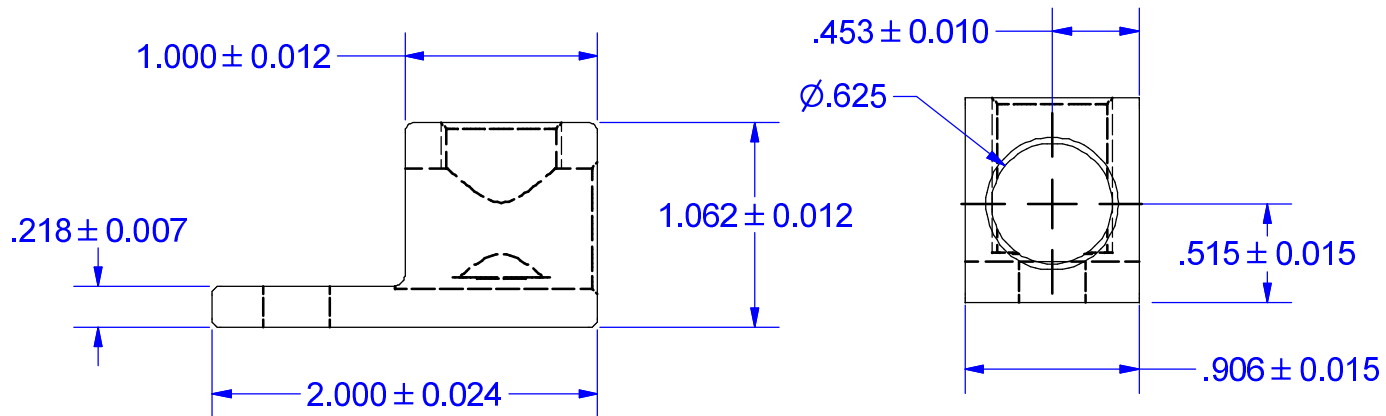
FOR FURTHER INFORMATION ON THE PROPER USE OF THIS PRODUCT IN SPECIFIC APPLICATIONS SEE  
<http://www.ihconnectors.com/GuideToFlexFlexibleFineStrandedWireCableMechanicalLugsFAQ.html>  
[http://www.ihconnectors.com/High\\_Amp\\_Wide\\_Trace\\_PCB\\_Wire\\_Connection.html](http://www.ihconnectors.com/High_Amp_Wide_Trace_PCB_Wire_Connection.html)  
<http://www.ihconnectors.com/Technical-Data-Installation.htm>

**FLEX WIRE 4/0-6 AWG**

THIS DRAWING AND DESIGN ARE THE PROPERTY OF INTERNATIONAL HYDRAULICS, INC., CLEVELAND, OHIO, AND MAY NOT BE DUPLICATED, USED FOR THE BASIS OF DESIGN OR MANUFACTURE WITHOUT THE WRITTEN PERMISSION OF INTERNATIONAL HYDRAULICS, INC., CLEVELAND, OHIO.					<b>INTERNATIONAL HYDRAULICS, INC.</b>				
<b>GENERAL TOLERANCES ±.015 (±0.038)</b>					TITLE: <b>S250-PCB-KIT, S300-PCB-KIT</b>				
					<b>PCB MOUNT ASSEMBLY</b>				
MATERIAL:		SIZE:	DRAWN BY:	DWG NO.:	REV:				
			<b>TDS</b>	S300 (250) PCB Mount Assembly	<b>R1</b>				
FINISH:		DATE:					<b>IHI CONNECTORS</b>		
		<b>10/27/11</b>							



SCREW # 14237  
(ALUMINUM TIN PLATED)

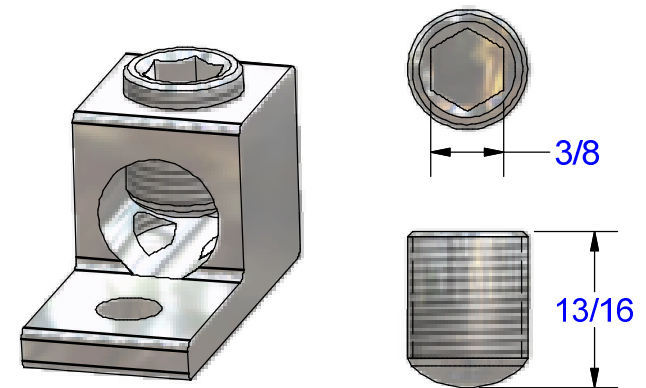
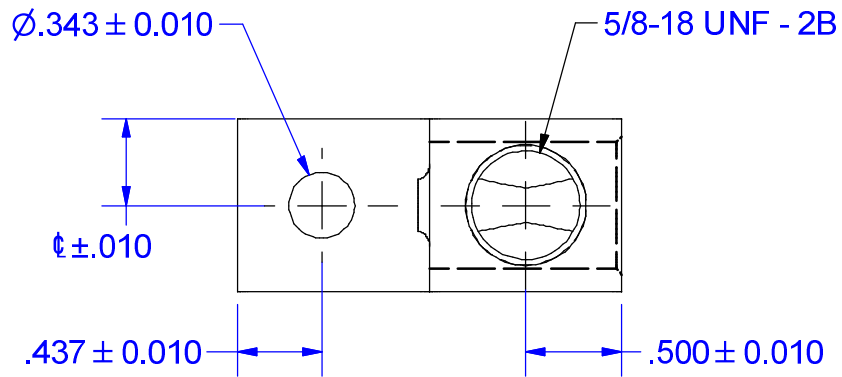


**PART MARKED**  
250 MCM-6  
CU9AL  
UL Logo  
CSA logo  
IHI Logo  
S250

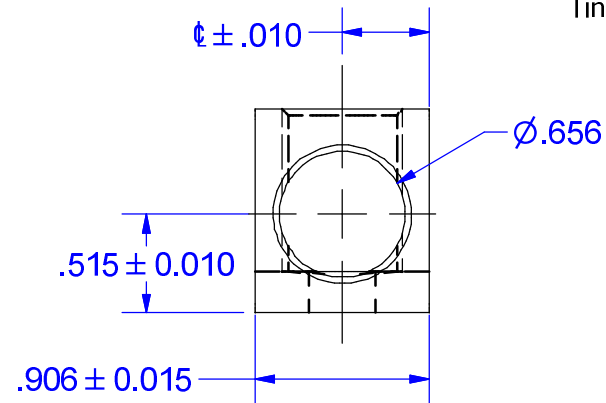
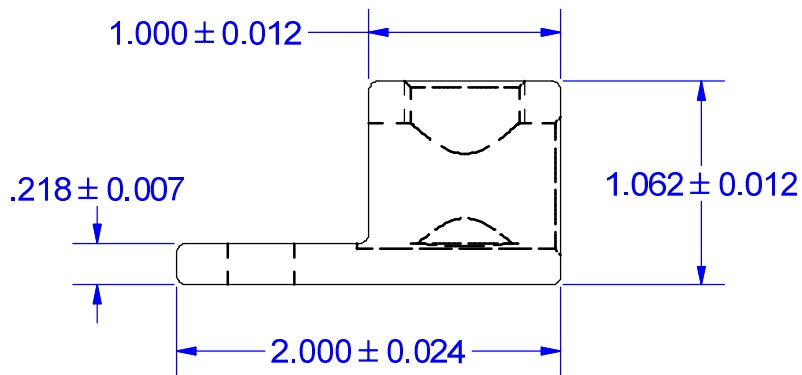
NOT FOR USE WHERE FAILURE CREATES A HAZARD TO HUMAN HEALTH OR SAFETY. ALL PRODUCTS ARE SUBJECT TO THIS FULL DISCLAIMER: <http://www.ihconnectors.com/disclaimer.html>

FOR FURTHER INFORMATION ON THE PROPER USE OF THIS PRODUCT IN SPECIFIC APPLICATIONS SEE <http://www.ihconnectors.com/GuideToFlexFlexibleFineStrandedWireCableMechanicalLugsFAQ.html> <http://www.ihconnectors.com/Technical-Data-Installation.htm>

THIS DRAWING AND DESIGN ARE THE PROPERTY OF INTERNATIONAL HYDRAULICS, INC., CLEVELAND, OHIO, AND MAY NOT BE DUPLICATED, USED FOR THE BASIS OF DESIGN OR MANUFACTURE WITHOUT THE WRITTEN PERMISSION OF INTERNATIONAL HYDRAULICS, INC., CLEVELAND, OHIO.		INTERNATIONAL HYDRAULICS, INC.		
GENERAL TOLERANCES $\pm .015 (\pm 0.038)$		TITLE: <b>S250 (SALES) CONNECTOR</b>		
MATERIAL: <b>6061-T6 (X1003)</b>	SIZE:	DRAWN BY: <b>TDS</b>	DWG NO.: <b>S250 (SALES)</b>	REV:
FINISH: <b>TIN PLATE EMS</b>	DATE: <b>2/20/09</b>	<b>IHI CONNECTORS</b>		



SCREW #14237  
(2011-T3 Aluminum)  
Tin Plated

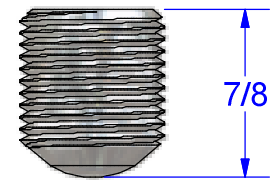
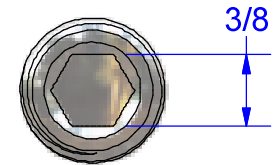
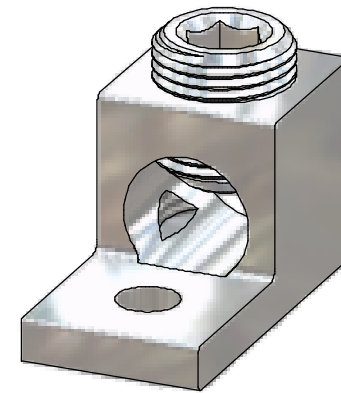
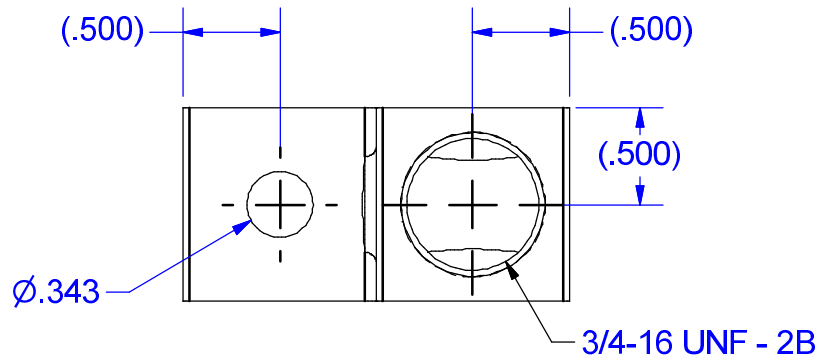


PARTS MARKED  
300 KCMIL-6  
CU9AL  
UL LOGO  
CSA LOGO  
IHI LOGO  
S300

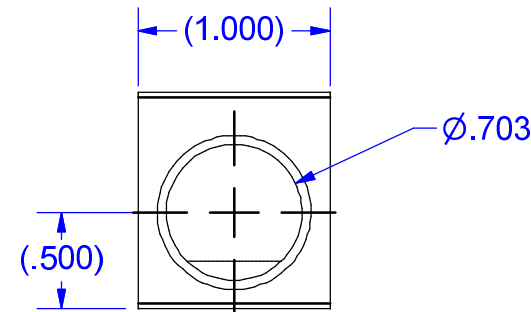
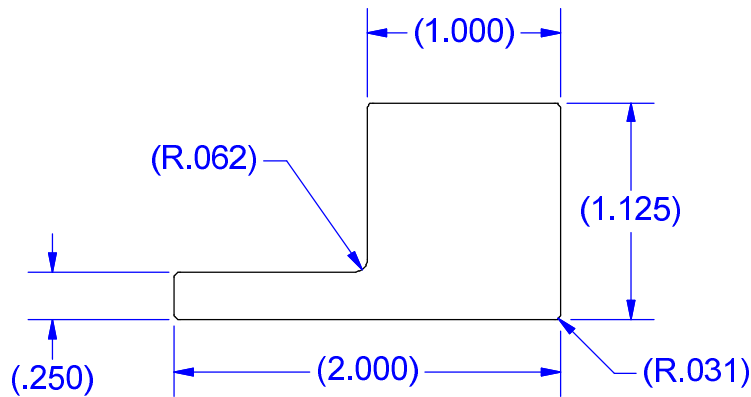
NOT FOR USE WHERE FAILURE CREATES A HAZARD TO HUMAN HEALTH OR SAFETY. ALL PRODUCTS ARE SUBJECT TO THIS FULL DISCLAIMER: <http://www.ihiconnectors.com/disclaimer.html>

FOR FURTHER INFORMATION ON THE PROPER USE OF THIS PRODUCT IN SPECIFIC APPLICATIONS SEE <http://www.ihiconnectors.com/GuideToFlexFlexibleFineStrandedWireCableMechanicalLugsFAQ.html>  
<http://www.ihiconnectors.com/Technical-Data-Installation.htm>

THIS DRAWING AND DESIGN ARE THE PROPERTY OF INTERNATIONAL HYDRAULICS, INC., CLEVELAND, OHIO, AND MAY NOT BE DUPLICATED, USED FOR THE BASIS OF DESIGN OR MANUFACTURE WITHOUT THE WRITTEN PERMISSION OF INTERNATIONAL HYDRAULICS, INC., CLEVELAND, OHIO.		INTERNATIONAL HYDRAULICS, INC.		
GENERAL TOLERANCES $\pm .015$ ( $\pm 0.038$ )		TITLE: <b>S300 (SALES) CONNECTOR</b>		
MATERIAL: <b>6061-T6 (X1003)</b>	SIZE:	DRAWN BY: <b>TDS</b>	DWG NO.: <b>S300 (SALES)</b>	REV:
FINISH: <b>TIN PLATE EMS</b>	DATE: <b>1/8/09</b>	THIS IS A CAD DRAWING, DO NOT MANUALLY REVISE		



SCREW#14241  
(ALUMINUM  
TIN PLATED)



**MARKING**

S350  
350 KCMIL-6  
CU9AL  
IHI  
CSA LOGO  
UL LOGO

NOT FOR USE WHERE FAILURE CREATES A HAZARD TO HUMAN HEALTH OR SAFETY. ALL PRODUCTS ARE SUBJECT TO THIS FULL DISCLAIMER: <http://www.ihconnectors.com/disclaimer.html>

FOR FURTHER INFORMATION ON THE PROPER USE OF THIS PRODUCT IN SPECIFIC APPLICATIONS SEE <http://www.ihconnectors.com/GuideToFlexFlexibleFineStrandedWireCableMechanicalLugsFAQ.html> <http://www.ihconnectors.com/Technical-Data-Installation.htm>

THIS DRAWING AND DESIGN ARE THE PROPERTY OF INTERNATIONAL HYDRAULICS, INC., CLEVELAND, OHIO, AND MAY NOT BE DUPLICATED, USED FOR THE BASIS OF DESIGN OR MANUFACTURE WITHOUT THE WRITTEN PERMISSION OF INTERNATIONAL HYDRAULICS, INC., CLEVELAND, OHIO.		INTERNATIONAL HYDRAULICS, INC.		
GENERAL TOLERANCES ±.015 (±0,038)		TITLE: <b>S350 CONNECTOR</b>		
MATERIAL: <b>6061-T6 (X0010)</b>	SIZE:	DRAWN BY: <b>TDS</b>	DWG NO.: <b>S350-(SALES)</b>	REV:
FINISH: <b>TIN PLATE EMS</b>	DATE: <b>12/10/08</b>	THIS IS A CAD DRAWING, DO NOT MANUALLY REVISE		