

MINIMUM
.949
TRIM LENGTH
(BOTH SIDES)

*.748 ± 0.01

.256 ± 0.01

.500 ± 0.010

5/8-18 UNF - 2B

Ø 0.26 FOR 1/4" OR M6 BOLT

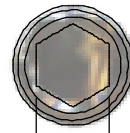
1.000 ± 0.012

1.062 ± 0.012

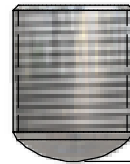
.218 ± 0.007

2.000 ± 0.024

R.050
(TYP.)

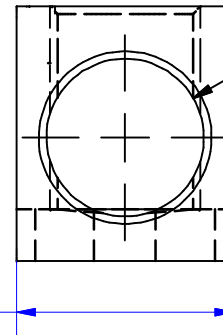
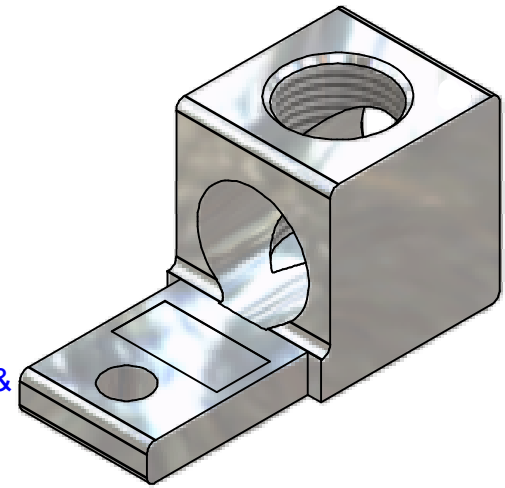


5/16 &
8mm



13/16

14237-M SCREW INSTALLED
TIN PLATED ALUMINUM



Ø.656

.515 ± 0.010

.906 ± 0.015

PART MARKED

S300
300 KCMIL-6
CU9AL
UL Logo
IHI Logo
CSA Logo

NOT FOR USE WHERE FAILURE CREATES A HAZARD TO HUMAN HEALTH OR SAFETY. ALL PRODUCTS ARE SUBJECT TO THIS FULL DISCLAIMER: <http://www.ihconnectors.com/disclaimer.html>

FOR FURTHER INFORMATION ON THE PROPER USE OF THIS PRODUCT IN SPECIFIC APPLICATIONS SEE <http://www.ihconnectors.com/GuideToFlexFlexibleFineStrandedWireCableMechanicalLugsFAQ.html>
<http://www.ihconnectors.com/Technical-Data-Installation.htm>

WEB PRINT RELEASED 2-26-2015

THIS DRAWING AND DESIGN ARE THE PROPERTY OF INTERNATIONAL HYDRAULICS, INC., CLEVELAND, OHIO, AND MAY NOT BE DUPLICATED, USED FOR THE BASIS OF DESIGN OR MANUFACTURE WITHOUT THE WRITTEN PERMISSION OF INTERNATIONAL HYDRAULICS, INC., CLEVELAND, OHIO.

UNLESS OTHERWISE SPECIFIED:

+/- .015

INTERNATIONAL HYDRAULICS, INC.

TITLE:

S300-T-26-26-M 1/4" OR M6 BOLT
MOUNTING HOLE LUG
kcmil 300-6 AWG WIRE RANGE

MATERIAL:

6061-T6

SIZE:

DRAWN BY:

TDS

DWG NO.:

S300-T-26-26-M(WEB)

REV:

FINISH:

TINPLATED

DATE:

8/25/09

THIS IS A CAD DRAWING, DO NOT MANUALLY REVISE