

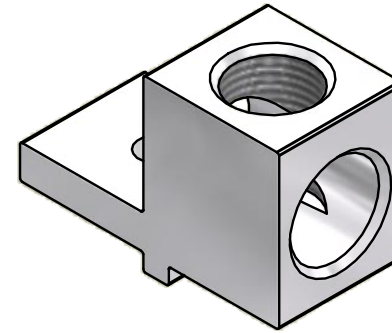
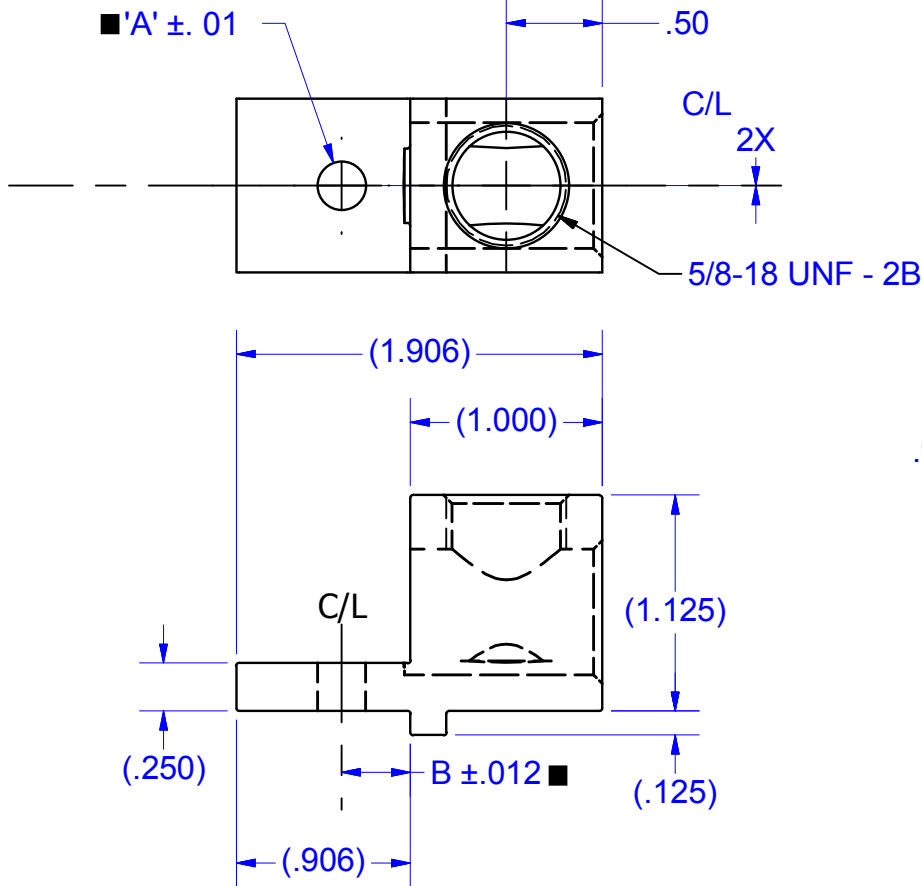
**PART MARKED**

S300  
300 KCMIL-6  
CU9AL  
UL Logo  
CSA Logo  
IHI Logo

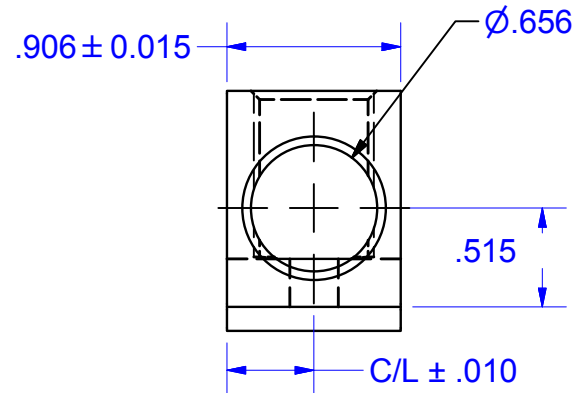
IHI UL/CSA Installation Guide to Drill or Enlarge Mounting Holes:  
<https://lugsdirect.com/PDF%20Documents/IHI-MTG-HOLE-FIELD-MODS-UL&CSA-CERTIFICATIONS.pdf>

REV	DESCRIPTION	DATE	BY
1	MADE INTO CHARTED PRINT	3/21/2016	DJH

- Cat. No. S300 Style No. ALL
- Drill, Enlarge, or Modify Mounting Holes
  - 1) Increase hole(s) dia. to 1/2 bolt (17/32 drill dia.)
  - 2) Move location of mounting hole(s)
  - 3) If buying blank lug, put custom hole(s) in.



INSTALL 1Pc  
14237 3/8" HEX  
SKT SCREW,  
FULLY SEATED



NOT FOR USE WHERE FAILURE CREATES A HAZARD TO HUMAN HEALTH OR SAFETY. ALL PRODUCTS ARE SUBJECT TO THIS FULL DISCLAIMER: <http://www.ihconnectors.com/disclaimer.html>

FOR FURTHER INFORMATION ON THE PROPER USE OF THIS PRODUCT IN SPECIFIC APPLICATIONS SEE <http://www.ihconnectors.com/GuideToFlexFlexibleFineStrandedWireCableMechanicalLugsFAQ.html>

<http://www.ihconnectors.com/Technical-Data-Installation.htm>

Part Body	'A'	'B'	WEG ASSY	WEG QTY
S300-TP-34-51	0.343	.512	---	--

<small>THIS DRAWING AND DESIGN ARE THE PROPERTY OF INTERNATIONAL HYDRAULICS, INC., CLEVELAND, OHIO, AND MAY NOT BE DUPLICATED, USED FOR THE BASIS OF DESIGN OR MANUFACTURE WITHOUT THE WRITTEN PERMISSION OF INTERNATIONAL HYDRAULICS, INC., CLEVELAND, OHIO.</small>		<b>INTERNATIONAL HYDRAULICS, INC.</b>	
<b>GENERAL TOLERANCES +/- .015</b>		<b>TITLE:</b> <b>S300TP34-51 SALES</b> <b>CUSTOM HOLE TURNPREVENT</b>	
<b>MATERIAL:</b> <b>6061-T6 (X1063)</b>	<b>SIZE:</b> <b>TDS</b>	<b>DRAWN BY:</b> <b>TDS</b>	<b>DWG NO.:</b> <b>S300-TP-34-51</b>
<b>TIN PLATE: EMS</b> <b>FINISH: 1001.1</b>	<b>DATE:</b> <b>1 /30/17</b>	<b>REV:</b> <b>1</b>	<b>THIS IS A CAD DRAWING, DO NOT MANUALLY REVISE</b>