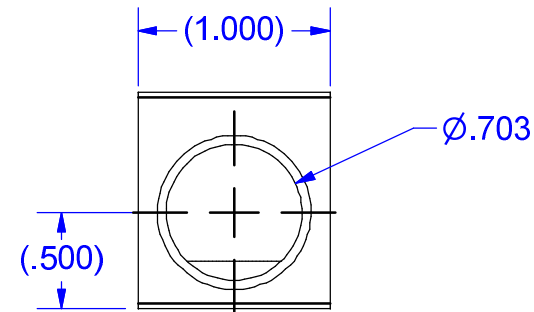
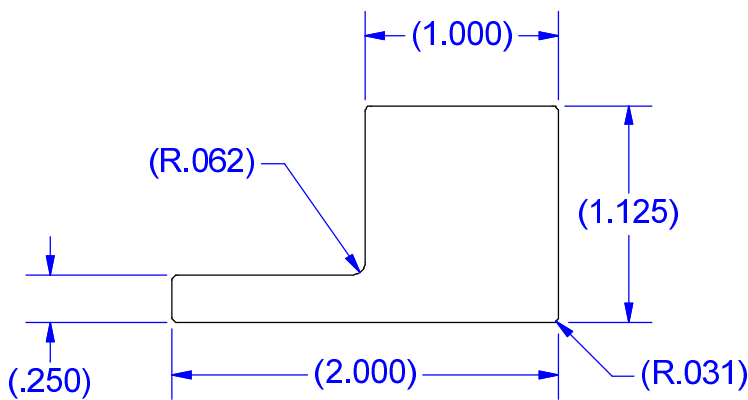


SCREW#14241
(ALUMINUM
TIN PLATED)



MARKING
S350
350 KCMIL-6
CU9AL
IHI
CSA LOGO
UL LOGO

NOT FOR USE WHERE FAILURE CREATES A HAZARD TO HUMAN HEALTH OR SAFETY. ALL PRODUCTS ARE SUBJECT TO THIS FULL DISCLAIMER: <http://www.ihconnectors.com/disclaimer.html>

FOR FURTHER INFORMATION ON THE PROPER USE OF THIS PRODUCT IN SPECIFIC APPLICATIONS SEE <http://www.ihconnectors.com/GuideToFlexFlexibleFineStrandedWireCableMechanicalLugsFAQ.html> <http://www.ihconnectors.com/Technical-Data-Installation.htm>

ISSUED 1-22-2015
CDMR

THIS DRAWING AND DESIGN ARE THE PROPERTY OF INTERNATIONAL HYDRAULICS, INC., CLEVELAND, OHIO, AND MAY NOT BE DUPLICATED, USED FOR THE BASIS OF DESIGN OR MANUFACTURE WITHOUT THE WRITTEN PERMISSION OF INTERNATIONAL HYDRAULICS, INC., CLEVELAND, OHIO.		INTERNATIONAL HYDRAULICS, INC.		
GENERAL TOLERANCES ±.015 (±0.038)		TITLE: S350-53-50 1/2" (12mm) MOUNTING BOLT		
MATERIAL: 6061-T6 (X0010)	SIZE:	DRAWN BY: TDS	DWG NO.: S350-53-50	REV:
FINISH: TIN PLATE EMS	DATE: 12/10/08	THIS IS A CAD DRAWING, DO NOT MANUALLY REVISE		