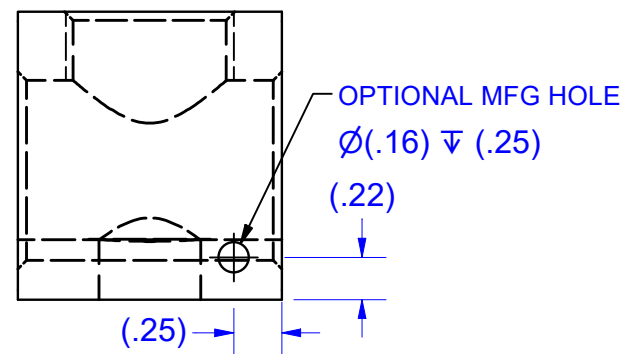
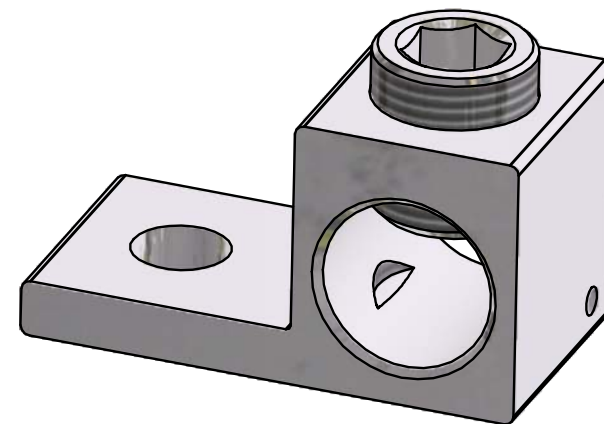
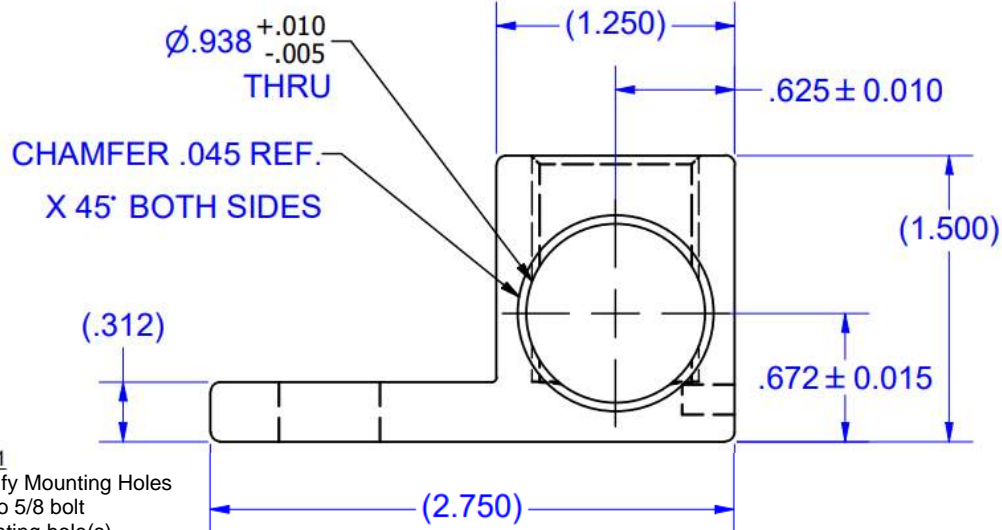


**PARTS MARKED**

600 KCMIL-4  
 CU9AL  
 UL Logo  
 IHI Logo  
 S600



Cat No. S600 Style No. 1

- Drill, Enlarge, or Modify Mounting Holes
- 1) Increase hole(s) dia. to 5/8 bolt
- 2) Move location of mounting hole(s)
- 3) If buying blank lug, put custom hole(s) in.

IHI UL/CSA Installation Guide to Drill or Enlarge Mounting Holes:  
[lugsdirect.com/PDF%20Documents/IHI-MTG-HOLE-FIELD-MODS-UL&CSA-CERTIFICATIONS.pdf](http://lugsdirect.com/PDF%20Documents/IHI-MTG-HOLE-FIELD-MODS-UL&CSA-CERTIFICATIONS.pdf)

COPYRIGHT (PER LATEST REVISION DATE) OF INTERNATIONAL HYDRAULICS, INC. (IHI®). ALL RIGHTS RESERVED. THIS COMPLETE ENGINEERING DRAWING, SCHEMATICS, AND DESIGN ARE PROPRIETARY AND CONFIDENTIAL PROPERTY OF INTERNATIONAL HYDRAULICS, INC. DBA: IHI CONNECTORS® IN CLEVELAND, OHIO, AND MAY NOT BE DUPLICATED, USED FOR THE BASIS OF DESIGN OR MANUFACTURE WITHOUT PRIOR WRITTEN PERMISSION OF ITS OWNER. Contents contain a combination of registered trademark, copyright, or patent protections exclusively owned by IHI® which are not to be infringed upon.

Not for use where failure creates a hazard to human health or safety. All products are subject to this full disclaimer:  
[ihiconnectors.com/disclaimer.html](http://ihiconnectors.com/disclaimer.html)

FOR FURTHER INFORMATION ON THE PROPER USE OF THIS PRODUCT IN SPECIFIC APPLICATIONS SEE  
[ihiconnectors.com/GuideToFlexFlexibleFineStrandedWireCableMechanicalLugsFAQ.html](http://ihiconnectors.com/GuideToFlexFlexibleFineStrandedWireCableMechanicalLugsFAQ.html)  
[ihiconnectors.com/Technical-Data-Installation.htm](http://ihiconnectors.com/Technical-Data-Installation.htm)

THIS DRAWING AND DESIGN ARE THE PROPERTY OF INTERNATIONAL HYDRAULICS, INC., CLEVELAND, OHIO, AND MAY NOT BE DUPLICATED, USED FOR THE BASIS OF DESIGN OR MANUFACTURE WITHOUT THE WRITTEN PERMISSION OF INTERNATIONAL HYDRAULICS, INC., CLEVELAND, OHIO.		<b>INTERNATIONAL HYDRAULICS, INC.</b>	
<b>GENERAL TOLERANCES ±.015 (±0.038)</b>		TITLE: <b>S600-53-63-SE CONNECTOR</b>	
MATERIAL: <b>6061-T6 (X600)</b>	SIZE:	DRAWN BY: <b>TDS</b>	DWG NO.: <b>S600-53-63-SE (SALES)</b>
FINISH: <b>TIN PLATE EMS 131</b>	DATE: <b>7/27/09</b>	REV: <b>IHI CONNECTORS</b>	