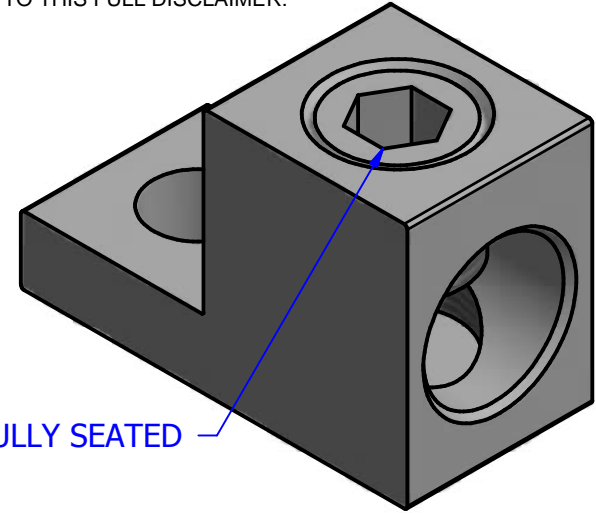
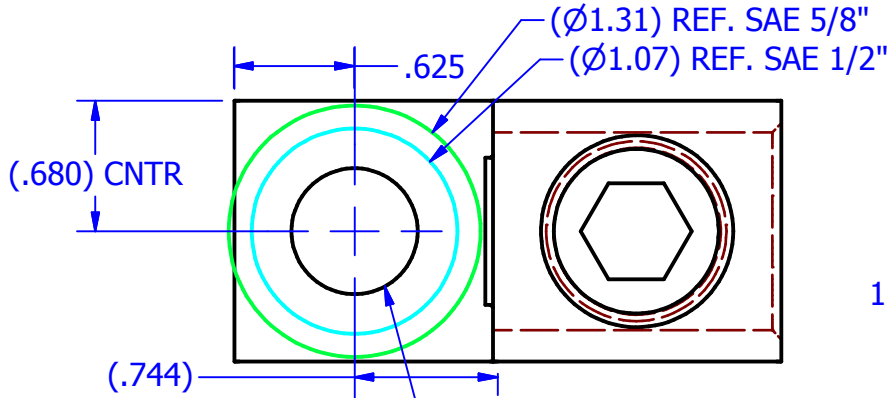


NOT FOR USE WHERE FAILURE CREATES A HAZARD TO HUMAN HEALTH OR SAFETY. ALL PRODUCTS ARE SUBJECT TO THIS FULL DISCLAIMER:  
<https://www.ihconnectors.com/disclaimer.html>

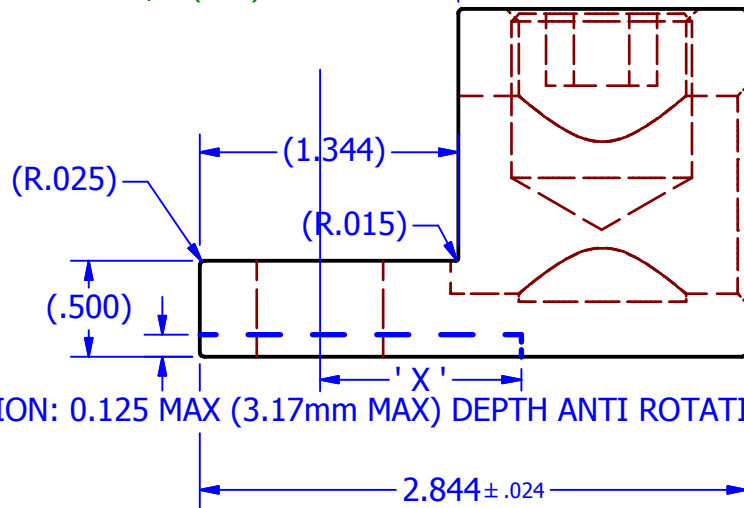
FOR FURTHER INFORMATION ON THE PROPER USE OF THIS PRODUCT IN SPECIFIC APPLICATIONS SEE:  
<https://www.ihconnectors.com/Technical-Data-Installation.htm>



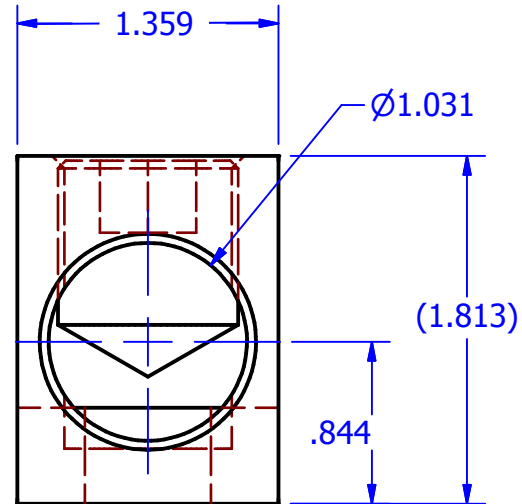
1 PC. 11939 SCREW FULLY SEATED

PART NO.	BOLT SIZE	HOLE SIZE "A"
S750-66-63	5/8" (M16)	0.656 DIA MAY BE DRILLED OUT USING PART BELOW
S750-53-63	1/2" (M12)	0.530 DIA
S750-66-X-TP	5/8" (M16)	0.656 DIA MAY BE DRILLED OUT USING PART BELOW
S750-53-X-TP	1/2" (M12)	0.530 DIA

(1.500)



OPTION: 0.125 MAX (3.17mm MAX) DEPTH ANTI ROTATION STEP MAY BE CUSTOM ORDERED WITH ANY "X" DISTANCE, MOQ APPLIES



PART MARKED: IHI 2S750 750-1/0 UL CSA CU9AL.  
 UL FILE: E129884, CSA FILE: 200116  
 TEMPERATURE RATING: 90C USER TORQUE: 375 IN-LBF ( 42.4 N-M)  
 SCREW: 11939 15/16"-16 2A X 1.125 LONG TIN PLATED ALUMINUM ALLOY  
 HEX DRIVE KEY 0.50 INCH

THIS DRAWING AND DESIGN ARE THE PROPERTY OF INTERNATIONAL HYDRAULICS, INC., CLEVELAND, OHIO, AND MAY NOT BE DUPLICATED, USED FOR THE BASIS OF DESIGN OR MANUFACTURE WITHOUT THE WRITTEN PERMISSION OF INTERNATIONAL HYDRAULICS, INC., CLEVELAND, OHIO.

UNLESS OTHERWISE SPECIFIED:  
 1. DIMENSIONS ARE IN INCHES  
 2. REMOVE ALL BURRS AND SHARP EDGES  
 3. TOLERANCE ON DIMENSIONS:

+/- .015

MATERIAL:  
6061-T6

FINISH:  
TIN PLATED

INTERNATIONAL HYDRAULICS, INC.

TITLE:

750kcmil SINGLE WIRE LUG  
 NARROW FORMAT 1/2" OR 5/8" BOLTS

SIZE:  
A

DRAWN BY:  
cridley

DWG NO.:  
S750-XX-XX

REV:  
1

DATE:  
6-15-2016

THIS IS A CAD DRAWING, DO NOT MANUALLY REVISE