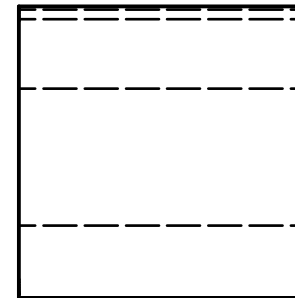
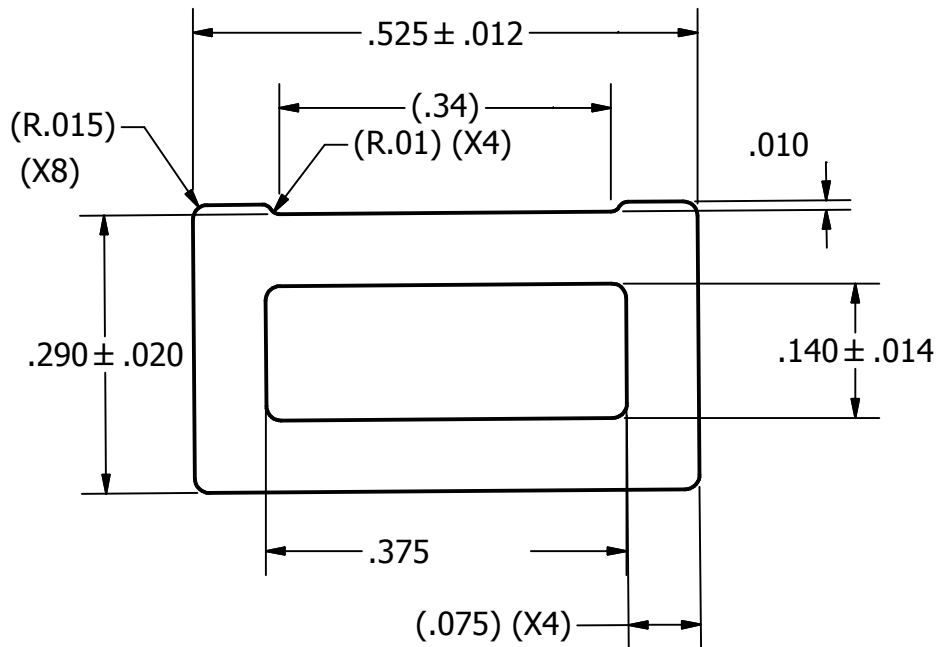
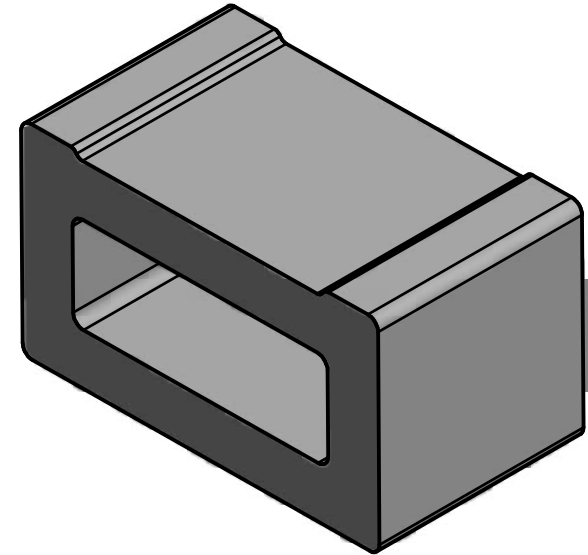


NOT FOR USE WHERE FAILURE CREATES A HAZARD TO HUMAN HEALTH OR SAFETY. ALL PRODUCTS ARE SUBJECT TO THIS FULL DISCLAIMER:
<http://www.ihiconnectors.com/disclaimer.html>

FOR FURTHER INFORMATION ON THE PROPER USE OF THIS PRODUCT IN SPECIFIC APPLICATIONS SEE
<http://www.ihiconnectors.com/GuideToFlexFlexibleFineStrandedWireCableMechanicalLugsFAQ.html>
<http://www.ihiconnectors.com/Precautions-when-using-SMT.pdf>
http://www.ihiconnectors.com/FAQ_SMT_SMD_High_CurrentPCB_Terminal_LugsSolderCreep.htm
http://www.ihiconnectors.com/High_Amp_Wide_Trace_PCB_Wire_Connection.html
<http://www.ihiconnectors.com/Technical-Data-Installation.htm>



1. SMT TIE DOWN
2. CURRENT SHUNT
3. HEAT SINK
4. SMT SPACER

1. USE TO ANCHOR OR STRAIN RELIEF WIRES ON PRINTED CIRCUIT BOARDS. MAY BE USED WITH NYLON WIRE TIES OR VELCRO STYLE WIRE TIES
2. USE AS A CURRENT SHUNT OR HEAT SINK AND CURRENT SHUNT FOR HIGH CURRENT ZONES

PAD SIZE TYPICALLY .025" LARGER THAN .525 x .300 BASE
 MAXIMUM RETENTION FORCE DEPENDS ON QUALITY OF SOLDERED JOINT AND THICKNESS / WEIGHT OF FOIL.

SALES PRINT

<small>THIS DRAWING AND DESIGN ARE THE PROPERTY OF INTERNATIONAL HYDRAULICS, INC., CLEVELAND, OHIO, AND MAY NOT BE DUPLICATED, USED FOR THE BASIS OF DESIGN OR MANUFACTURE WITHOUT THE WRITTEN PERMISSION OF INTERNATIONAL HYDRAULICS, INC., CLEVELAND, OHIO.</small>		INTERNATIONAL HYDRAULICS, INC.		
		TITLE: SMT TIE MOUNT		
GENERAL TOLERANCES ±.015 (±0,.39)		.075 WALL RIB TOP		
MATERIAL: 6005-T5 ALUM	SIZE: A	DRAWN BY: critley	DWG NO.: SMT-TIE-MOUNT	REV: A
FINISH: TIN SOLDERABLE	DATE: 8-8-2016	IHI CONNECTORS		