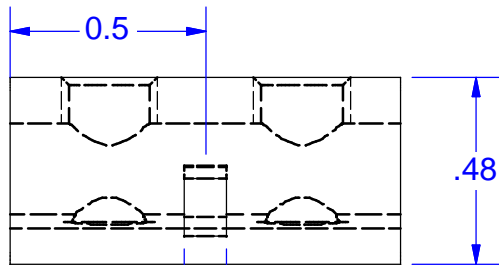
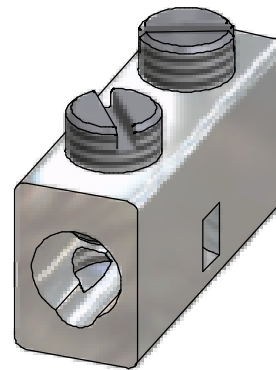


UL RATING APPLIES TO 4-14 AWG WIRE RANGE (2 BARRELS) ONLY.
MOUNTING SECURENESS AND FINAL ASSEMBLY CURRENT RATING IS SUBJECT TO FURTHER UL TESTING BY CUSTOMER.

PART MARKED
AL7CU
4-14
P4
IHI Logo
UL Logo

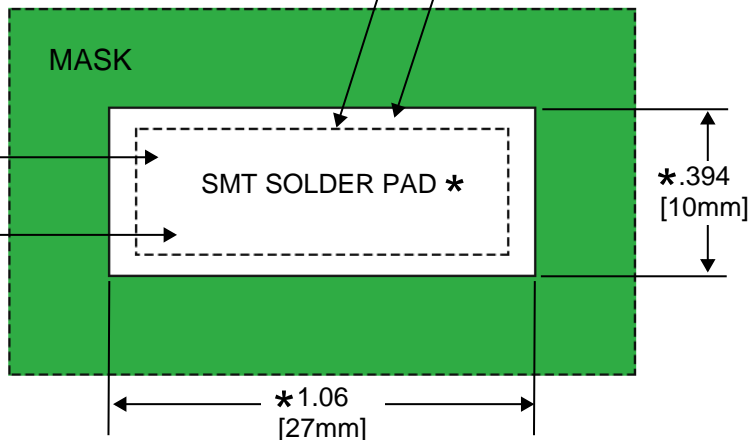
1/4-28 UNF - 2B



INDENT

PART OUTLINE

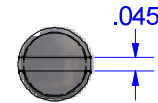
SOLDER FILET



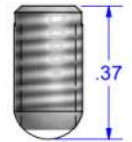
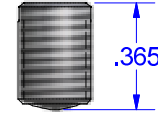
PLATED THRU VIAS
MAY BE USED

UTILIZE METHODS
TO MINIMIZE GAS
FORMATION IN
SOLDER PASTE
STENCIL

STANDARD



CUSTOM ORDER
OPTION



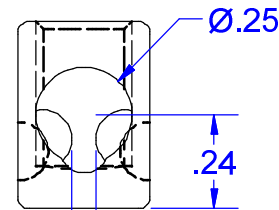
SCREW # 11489/15717
PLATED STEEL

ZINC PLATED LEAD
FREE STEEL
SPECIAL ORDER ONLY
1/8" HEX SKT OR 3MM
HEX SKT SCREWS

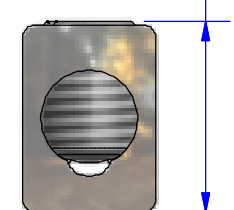
TORQUE (WIRE BINDING SCREWS)
SEE UL RATING LABEL

WIRE RANGE	TORQUE
10-14	20 in-lb
8	25 in-lb
6-4	35 in-lb

0.52 TYP AFTER
SCREW INSERTION
WITHOUT WIRE



SPACING
BETWEEN INDENTS



NOT FOR USE WHERE FAILURE CREATES A HAZARD TO HUMAN HEALTH OR SAFETY. ALL PRODUCTS ARE SUBJECT TO THIS FULL DISCLAIMER:

<http://www.ihconnectors.com/disclaimer.html>

FOR FURTHER INFORMATION ON THE PROPER USE OF THIS PRODUCT IN SPECIFIC APPLICATIONS SEE

<http://www.ihconnectors.com/Technical-Data-Installation.htm>

<http://www.ihconnectors.com/Precautions-when-using-SMT.pdf>

http://www.ihconnectors.com/FAQ_SMT_SMD_High_CurrentPCB_Terminal_LugsSolderCreep.htm

http://www.ihconnectors.com/High_Amp_Wide_Trace_PCB_Wire_Connection.html

THIS DRAWING AND DESIGN ARE THE PROPERTY OF INTERNATIONAL HYDRAULICS, INC., CLEVELAND, OHIO, AND MAY NOT BE DUPLICATED, USED FOR THE BASIS OF DESIGN OR MANUFACTURE WITHOUT THE WRITTEN PERMISSION OF INTERNATIONAL HYDRAULICS, INC., CLEVELAND, OHIO.

INTERNATIONAL HYDRAULICS, INC.

TITLE:

P4-SMT (SALES)
WIRE CONNECTOR - PCB

GENERAL TOLERANCES
±.015 (±0,038)

MATERIAL: 6061-T6

SIZE:

DRAWN BY:
TDS

DWG NO.:
P4-SMT (SALES)

REV:
0

FINISH: TIN PLATE
SOLDERABLE Sn/Ni

DATE:

01/26/09

IHI CONNECTORS