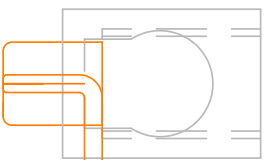


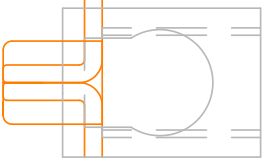
THIS DRAWING AND DESIGN ARE THE PROPERTY OF INTERNATIONAL HYDRAULICS, INC., MENTOR, OHIO. IT MAY NOT BE REPRODUCED OR USED FOR THE BASIS OF DESIGN OR MANUFACTURE, WITHOUT THE WRITTEN PERMISSION OF INTERNATIONAL HYDRAULICS, INC.

REVISIONS		BY	DATE
NR.	DESCRIPTION		

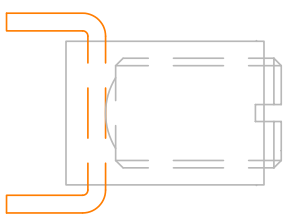
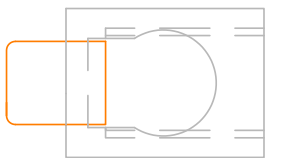
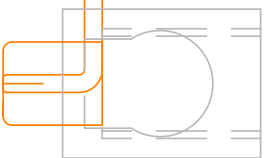
LOAD OUT



LINE IN

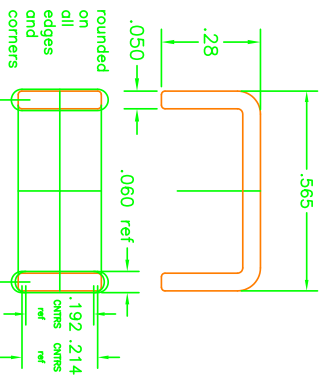
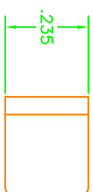


LOAD OUT

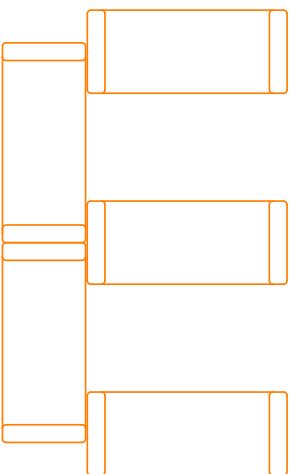


1

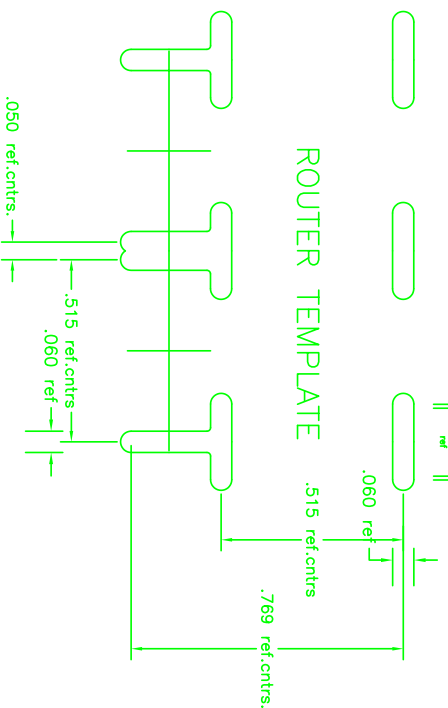
STANDARD 1/2" DIA. BUSH SOCKET  
CONNECTED TO THE BUSH SOCKET  
CONNECTOR AND 22288 STEEL SCREW



COPPER STAPLE BUS LAYOUT



Board requires a routed slot .06 wide x .192/.214 ctrs. long on .515 centers. Hole size in board can be varied to control fit from drop-in to force fit on corners.  
An assembly of three connectors requires two staple bus parts to be ordered with each three connectors.  
Refer also to data sheet on this part.  
All PCB layouts are tested by user for satisfactory performance. IH does not guarantee the performance of any end use configuration. UL and CSA approvals are for the connector and bus. All final assembled configurations must be tested to UL/CSA satisfaction to appropriate standards by the user. Typically in-situ heat rise, assembled pull out and other tests are required.



ROUTER TEMPLATE

**International Hydraulics**  
7638 ST. CLAIR AVE., MENTOR, OHIO

DWG BY: CDMR	TITLE: IH1 B2A or B2C-PCB TRIPLE MOUNT	REV:
DATE: 4/15/08	MATERIAL:	DWG: 3XB2A-PCB 3XB2C-PCB
	FINISH: Tin Solderable (Spec. EMS1001)	