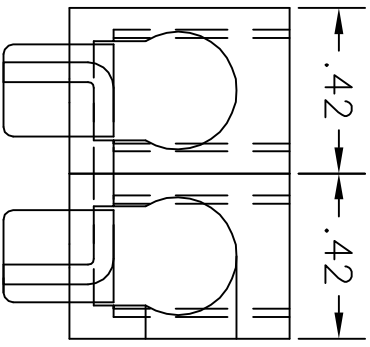


UNLESS OTHERWISE SPECIFIED, DIMENSIONS ARE IN INCHES. REMOVE ALL BURRS AND SHARP EDGES.  
 TOLERANCES: 2 PLACE (.XX) ±.010 FRACTION ±1/64  
 3 PLACE (.XXX) ±.005 ANGLES ±1/2 DEGREE

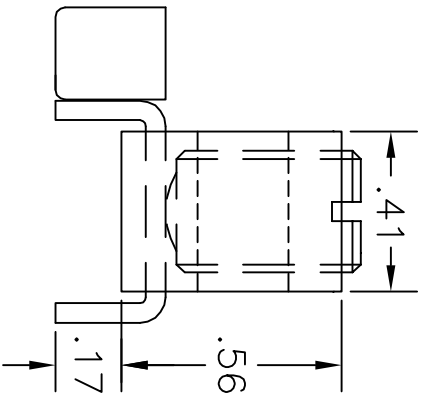
THIS DRAWING AND DESIGN ARE THE PROPERTY OF INTERNATIONAL HYDRAULICS, INC., MENTOR, OHIO. IT MAY NOT BE REPRODUCED OR USED FOR THE BASIS OF DESIGN OR MANUFACTURE, WITHOUT THE WRITTEN PERMISSION OF INTERNATIONAL HYDRAULICS, INC.

REVISONS	DESCRIPTION	BY	DATE
NR.			

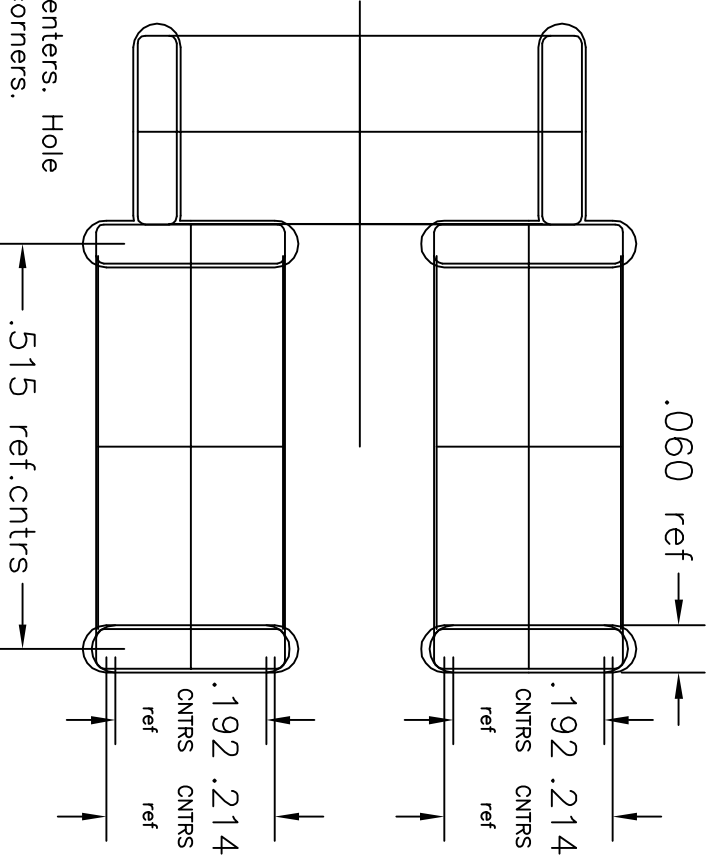


B2A-PCB PASS THROUGH LAYOUT

PASS THROUGH LAYOUT WITH CURRENT SHUNT  
 SHOWING (3)pcs 1425Z BUSS STAPLE ASSEMBLED WITH (2)pcs B2A WIRE CONNECTOR and (2) pcs 12786 STEEL SCREWS



Board requires a routed slot .06 wide x .192/.214 cntrs. long on .515 centers. Hole size in board can be varied to control fit from drop-in to force fit on corners.



# International Hydraulics

7638 ST. CLAIR AVE., MENTOR, OHIO

DWG. BY: CDMR  
 DATE: 3/13/00

TITLE: B2A-PCB SHUNT PAIR MOUNT  
 MATERIAL: FINISH: Tin Solderable (Spec. EMS1001)

REV: 1  
 DWG: B2A-PCB(SHUNT)